

SOP02515

Service RTM Baggage Door Strut Bracket Repair

Department: 32 Service
 People Required: One
 Time to Complete: 15 min
 Date Created: 14/01/2020
 Date Revised: Rev #:
 Created by Initial: JR2131 Verified: WP1645
 Page 1 of 1

Safe Work Procedures:



Mark out the position of where the bracket must be fixed.

1



Sand the marked out area on the door with 80 grit sandpaper to roughen and remove all loose debris.

2



Sand the back of the bracket with 80 grit sandpaper to roughen and remove all loose debris.

3



Clean the door sanded area with Isopropyl. Wait for it to flash-off.

4



Clean the sanded bracket with Isopropyl. Wait for it to flash-off.

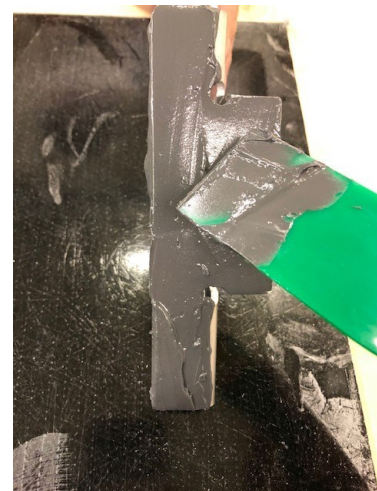
5



Mix-up J-B Weld **Original** as per instructions on packet.

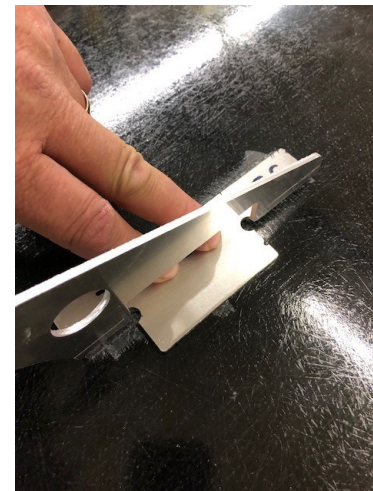
Two equal lines of adhesive 5" (130mm) should be enough for one bracket.

6



Spread the mixed epoxy evenly on the bottom of the bracket.

7



Place the bracket and apply even pressure to push it into position.

Stick tape over bracket to hold it in place while drying.

8

Clean off any excess epoxy while epoxy still wet.

Allow 4 hours drying time. Do NOT attach strut within the 4 hours.

9



Broken-off strut bracket.

Technical Data:

Follow JB Weld instructions.